

ACI Racing Weekend Mugello, 09-10 Ottobre 2021

Results Collective Test 2

Aut.Int. Mugello 5.245 m

1 / 2

No.	Driver	Nat	Entrant	Team	Car	Class	Time	Gap	Rel.	Laps
1	1 ARON Paul	EST	Prema Powerteam	Prema Powerteam	Formula Alpine		1'42.778			17
2	30 BELOV Michael	RUS	G4 Racing	G4 Racing	Formula Alpine		1'42.887	0.109	0.109	16
3	17 BEGANOVIC Dino	SWE	Prema Powerteam	Prema Powerteam	Formula Alpine	R	1'42.965	0.187	0.078	16
4	35 DELLI GUANTI Pietro	ITA	Monolite Racing	Monolite Racing	Formula Alpine	R	1'43.341	0.563	0.376	14
5	12 VIDALES David	ESP	Prema Powerteam	Prema Powerteam	Formula Alpine		1'43.367	0.589	0.026	15
6	64 BOYA Mari	ESP	Van Amersfoort Racing	Van Amersfoort Racing	Formula Alpine	R	1'43.460	0.682	0.093	15
7	8 ALATALO William	FIN	Arden	Arden	Formula Alpine		1'43.671	0.893	0.211	16
8	85 BORTOLETO Gabriel	BRA	FA Racing	FA Racing	Formula Alpine	R	1'43.765	0.987	0.094	16
9	6 HADJAR Isack	FRA	R-Ace GP	R-Ace GP	Formula Alpine	R	1'43.816	1.038	0.051	15
10	26 SAUCY Grégoire	CHE	ART Grand Prix	ART Grand Prix	Formula Alpine		1'43.853	1.075	0.037	16
11	33 COHEN Ido	ISR	JD Motorsport	JD Motorsport	Formula Alpine		1'43.862	1.084	0.009	15
12	46 MINI Gabriele	ITA	ART Grand Prix	ART Grand Prix	Formula Alpine	R	1'43.923	1.145	0.061	19
13	43 COLAPINTO Franco	ARG	MP Motorsport	MP Motorsport	Formula Alpine		1'43.961	1.183	0.038	16
14	21 QUINN Alex	GBR	Arden	Arden	Formula Alpine		1'43.989	1.211	0.028	16
15	27 HAVERKORT Kas	NED	MP Motorsport	MP Motorsport	Formula Alpine	R	1'43.989	1.211		16
16	10 DAVID Hadrien	FRA	R-Ace GP	R-Ace GP	Formula Alpine		1'44.024	1.246	0.035	15
17	51 PIZZI Francesco	ITA	Van Amersfoort Racing	Van Amersfoort Racing	Formula Alpine	R	1'44.092	1.314	0.068	16
18	19 ROSSO Andrea	ITA	FA Racing	FA Racing	Formula Alpine	R	1'44.133	1.355	0.041	16
19	5 PASMA Patrik	FIN	ART Grand Prix	ART Grand Prix	Formula Alpine		1'44.260	1.482	0.127	16
20	11 PETECOF Gianluca	BRA	KIC Motorsport	KIC Motorsport	Formula Alpine		1'44.407	1.629	0.147	16
21	22 MALONEY Zane	BAR	R-Ace GP	R-Ace GP	Formula Alpine		1'44.479	1.701	0.072	15
22	97 MEGUETOUNIF Sami	FRA	R-Ace GP	R-Ace GP	Formula Alpine	WC	1'44.510	1.732	0.031	15
23	99 GARFIAS José	MEX	Monolite Racing	Monolite Racing	Formula Alpine	R	1'44.546	1.768	0.036	16
24	77 VAN'T HOFF Dilano	NED	MP Motorsport	MP Motorsport	Formula Alpine	WC	1'44.598	1.820	0.052	16
25	96 GOETHE Oliver	DNK	MP Motorsport	MP Motorsport	Formula Alpine	R	1'44.682	1.904	0.084	16
26	2 GOHLER Nico	GER	KIC Motorsport	KIC Motorsport	Formula Alpine	R	1'44.806	2.028	0.124	15
27	14 MARINANGELI Nicola	ITA	Arden	Arden	Formula Alpine		1'45.096	2.318	0.290	16
28	62 FLUXA Lorenzo	ESP	Van Amersfoort Racing	Van Amersfoort Racing	Formula Alpine		1'45.118	2.340	0.022	15
29	41 PESCE Emidio	ITA	DR Formula	DR Formula	Formula Alpine		1'45.162	2.384	0.044	16
30	13 FERATI Jasin	CHE	KIC Motorsport	KIC Motorsport	Formula Alpine	R	1'45.341	2.563	0.179	15
31	91 BARRICHELLO Eduardo	BRA	JD Motorsport	JD Motorsport	Formula Alpine	R	1'45.365	2.587	0.024	16
32	16 SMITH Tommy	AUS	JD Motorsport	JD Motorsport	Formula Alpine		1'45.513	2.735	0.148	16
33	7 GNOS Axel	CHE	G4 Racing	G4 Racing	Formula Alpine	R	1'45.615	2.837	0.102	13
34	25 BARDINON Alexandre	FRA	FA Racing	FA Racing	Formula Alpine		1'45.845	3.067	0.230	15
35	89 DEUKMEDJIAN Arias	USA	FA Racing	FA Racing	Formula Alpine	WC	1'47.238	4.460	1.393	12
36	15 BUHLER Léna	CHE	R-Ace GP	R-Ace GP	Formula Alpine	R	1'47.441	4.663	0.203	11

Humidity:	68%	Air	15°C
Condition:	DRY	Track	16°C

Clerck of the Course : Antonio Canu

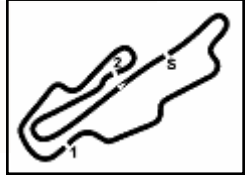
Race Director : Tamás Zettner Jr.

Start	End
08/10/2021 14:14	15:07



Powered by FICr PERUGIA TIMING





ACI Racing Weekend Mugello, 09-10 Ottobre 2021

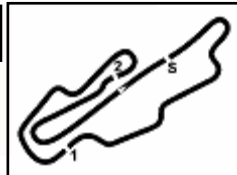
Results Collective Test 2

Penalty and Infringment

Fastest Laps Sequence

No.	Entrant	Nat	Team	Car	Local Time	Time	Gap	Avg
10	H. DAVID	FRA	R-Ace GP	Formula Alpine	14:31'01.836	1'50.393		171,043
2	N. GOHLER	GER	KIC Motorsport	Formula Alpine	14:31'34.409	1'49.035	-1.358	173,174
16	T. SMITH	AUS	JD Motorsport	Formula Alpine	14:31'45.894	1'48.819	-0.216	173,517
97	S. MEGUETOUNIF	FRA	R-Ace GP	Formula Alpine	14:32'10.570	1'47.437	-1.382	175,750
10	H. DAVID	FRA	R-Ace GP	Formula Alpine	14:32'48.040	1'46.204	-1.233	177,790
22	Z. MALONEY	BAR	R-Ace GP	Formula Alpine	14:32'51.434	1'45.967	-0.237	178,188
1	P. ARON	EST	Prema Powerteam	Formula Alpine	14:32'55.887	1'45.001	-0.966	179,827
35	P. DELLI GUANTI	ITA	Monolite Racing	Formula Alpine	14:34'00.766	1'44.412	-0.589	180,841
1	P. ARON	EST	Prema Powerteam	Formula Alpine	14:34'40.044	1'44.157	-0.255	181,284
17	D. BEGANOVIC	SWE	Prema Powerteam	Formula Alpine	14:34'46.372	1'43.898	-0.259	181,736
35	P. DELLI GUANTI	ITA	Monolite Racing	Formula Alpine	14:57'33.984	1'43.341	-0.557	182,715
1	P. ARON	EST	Prema Powerteam	Formula Alpine	14:57'52.251	1'43.021	-0.320	183,283
17	D. BEGANOVIC	SWE	Prema Powerteam	Formula Alpine	14:58'01.394	1'42.978	-0.043	183,360
30	M. BELOV	RUS	G4 Racing	Formula Alpine	15:02'05.714	1'42.971	-0.007	183,372
1	P. ARON	EST	Prema Powerteam	Formula Alpine	15:05'04.906	1'42.778	-0.193	183,716





Aut.Int. Mugello 5.245 m

ACI Racing Weekend Mugello, 09-10 Ottobre 2021

Sector and Speeds Collective Test 2

BEST LAP			
1	1	ARON Paul	Formula Alpine 1'42.778
2	30	BELOV Michael	Formula Alpine 1'42.887
3	17	BEGANOVIC Dino	Formula Alpine 1'42.965
4	35	DELLI GUANTI Pietro	Formula Alpine 1'43.341
5	12	VIDALES David	Formula Alpine 1'43.367
6	64	BOYA Mari	Formula Alpine 1'43.460
7	8	ALATALO William	Formula Alpine 1'43.671
8	85	BORTOLETO Gabriel	Formula Alpine 1'43.765
9	6	HADJAR Isack	Formula Alpine 1'43.816
10	26	SAUCY Grégoire	Formula Alpine 1'43.853
11	33	COHEN Ido	Formula Alpine 1'43.862
12	46	MINI Gabriele	Formula Alpine 1'43.923
13	43	COLAPINTO Franco	Formula Alpine 1'43.961
14	21	QUINN Alex	Formula Alpine 1'43.989
15	27	HAVERTKORT Kas	Formula Alpine 1'43.989
16	10	DAVID Hadrien	Formula Alpine 1'44.024
17	51	PIZZI Francesco	Formula Alpine 1'44.092
18	19	ROSSO Andrea	Formula Alpine 1'44.133
19	5	PASMA Patrik	Formula Alpine 1'44.260
20	11	PETECOF Gianluca	Formula Alpine 1'44.407
21	22	MALONEY Zane	Formula Alpine 1'44.479
22	97	MEGUETOUNIF Sami	Formula Alpine 1'44.510
23	99	GARFIAS José	Formula Alpine 1'44.546
24	77	VAN'T HOFF Dilano	Formula Alpine 1'44.598
25	96	GOETHE Oliver	Formula Alpine 1'44.682
26	2	GOHLER Nico	Formula Alpine 1'44.806
27	14	MARINANGELI Nicola	Formula Alpine 1'45.096
28	62	FLUXA Lorenzo	Formula Alpine 1'45.118
29	41	PESCE Emidio	Formula Alpine 1'45.162
30	13	FERATI Jasin	Formula Alpine 1'45.341
31	91	BARRICHELLO Eduardo	Formula Alpine 1'45.365
32	16	SMITH Tommy	Formula Alpine 1'45.513
33	7	GNOS Axel	Formula Alpine 1'45.615
34	25	BARDINON Alexandre	Formula Alpine 1'45.845
35	89	DEUKMEDJIAN Arias	Formula Alpine 1'47.238
36	15	BUHLER Léna	Formula Alpine 1'47.441

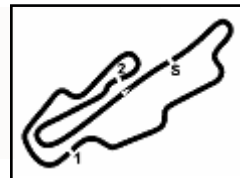
SPEED			
1	30	BELOV Michael	Formula Alpine 241,1
2	12	VIDALES David	Formula Alpine 240,5
3	35	DELLI GUANTI Pietro	Formula Alpine 239,5
4	5	PASMA Patrik	Formula Alpine 237,9
5	17	BEGANOVIC Dino	Formula Alpine 237,9
6	91	BARRICHELLO Eduardo	Formula Alpine 237,4
7	97	MEGUETOUNIF Sami	Formula Alpine 237,4
8	96	GOETHE Oliver	Formula Alpine 237,4
9	41	PESCE Emidio	Formula Alpine 237,4
10	85	BORTOLETO Gabriel	Formula Alpine 236,8
11	1	ARON Paul	Formula Alpine 236,8
12	16	SMITH Tommy	Formula Alpine 236,8
13	2	GOHLER Nico	Formula Alpine 236,3
14	7	GNOS Axel	Formula Alpine 236,3
15	99	GARFIAS José	Formula Alpine 236,3
16	43	COLAPINTO Franco	Formula Alpine 236,3
17	26	SAUCY Grégoire	Formula Alpine 236,3
18	33	COHEN Ido	Formula Alpine 235,8
19	64	BOYA Mari	Formula Alpine 235,8
20	62	FLUXA Lorenzo	Formula Alpine 235,3
21	14	MARINANGELI Nicola	Formula Alpine 235,3
22	15	BUHLER Léna	Formula Alpine 235,3
23	19	ROSSO Andrea	Formula Alpine 235,3
24	6	HADJAR Isack	Formula Alpine 235,3
25	27	HAVERTKORT Kas	Formula Alpine 234,8
26	10	DAVID Hadrien	Formula Alpine 234,8
27	46	MINI Gabriele	Formula Alpine 234,8
28	8	ALATALO William	Formula Alpine 234,8
29	22	MALONEY Zane	Formula Alpine 234,3
30	21	QUINN Alex	Formula Alpine 234,3
31	77	VAN'T HOFF Dilano	Formula Alpine 234,3
32	51	PIZZI Francesco	Formula Alpine 233,8
33	13	FERATI Jasin	Formula Alpine 233,8
34	25	BARDINON Alexandre	Formula Alpine 233,3
35	11	PETECOF Gianluca	Formula Alpine 233,3
36	89	DEUKMEDJIAN Arias	Formula Alpine 231,3

SEG. 1		
1	1	ARON Paul 35.619
2	30	BELOV Michael 35.701
3	8	ALATALO William 35.756
4	17	BEGANOVIC Dino 35.786
5	12	VIDALES David 35.795
6	64	BOYA Mari 35.808
7	26	SAUCY Grégoire 35.855
8	35	DELLI GUANTI Pietro 35.876
9	85	BORTOLETO Gabriel 35.960
10	6	HADJAR Isack 35.998
11	5	PASMA Patrik 35.999
12	43	COLAPINTO Franco 36.012
13	21	QUINN Alex 36.016
14	46	MINI Gabriele 36.019
15	19	ROSSO Andrea 36.030
16	27	HAVERTKORT Kas 36.071
17	97	MEGUETOUNIF Sami 36.081
18	51	PIZZI Francesco 36.094
19	10	DAVID Hadrien 36.119
20	22	MALONEY Zane 36.120
21	11	PETECOF Gianluca 36.155
22	99	GARFIAS José 36.158
23	33	COHEN Ido 36.171
24	96	GOETHE Oliver 36.229
25	14	MARINANGELI Nicola 36.232
26	2	GOHLER Nico 36.288
27	77	VAN'T HOFF Dilano 36.339
28	41	PESCE Emidio 36.369
29	62	FLUXA Lorenzo 36.377
30	7	GNOS Axel 36.386
31	91	BARRICHELLO Eduardo 36.393
32	16	SMITH Tommy 36.448
33	25	BARDINON Alexandre 36.473
34	13	FERATI Jasin 36.609
35	89	DEUKMEDJIAN Arias 37.285
36	15	BUHLER Léna 37.297

SEG. 2		
1	17	BEGANOVIC Dino 30.059
2	30	BELOV Michael 30.059
3	1	ARON Paul 30.101
4	64	BOYA Mari 30.192
5	33	COHEN Ido 30.324
6	21	QUINN Alex 30.366
7	8	ALATALO William 30.378
8	12	VIDALES David 30.378
9	26	SAUCY Grégoire 30.418
10	46	MINI Gabriele 30.445
11	10	DAVID Hadrien 30.446
12	35	DELLI GUANTI Pietro 30.467
13	97	MEGUETOUNIF Sami 30.471
14	85	BORTOLETO Gabriel 30.480
15	6	HADJAR Isack 30.522
16	51	PIZZI Francesco 30.532
17	77	VAN'T HOFF Dilano 30.597
18	22	MALONEY Zane 30.643
19	11	PETECOF Gianluca 30.643
20	5	PASMA Patrik 30.652
21	43	COLAPINTO Franco 30.663
22	27	HAVERTKORT Kas 30.672
23	19	ROSSO Andrea 30.681
24	96	GOETHE Oliver 30.731
25	62	FLUXA Lorenzo 30.756
26	2	GOHLER Nico 30.847
27	13	FERATI Jasin 30.921
28	14	MARINANGELI Nicola 30.946
29	7	GNOS Axel 30.981
30	99	GARFIAS José 30.993
31	41	PESCE Emidio 31.020
32	16	SMITH Tommy 31.172
33	91	BARRICHELLO Eduardo 31.198
34	25	BARDINON Alexandre 31.470
35	89	DEUKMEDJIAN Arias 31.603
36	15	BUHLER Léna 31.913

SEG. 3		
1	1	ARON Paul 36.963
2	17	BEGANOVIC Dino 36.966
3	30	BELOV Michael 36.981
4	35	DELLI GUANTI Pietro 36.998
5	12	VIDALES David 37.107
6	19	ROSSO Andrea 37.195
7	8	ALATALO William 37.203
8	85	BORTOLETO Gabriel 37.235
9	27	HAVERTKORT Kas 37.246
10	51	PIZZI Francesco 37.248
11	33	COHEN Ido 37.259
12	6	HADJAR Isack 37.277
13	10	DAVID Hadrien 37.282
14	43	COLAPINTO Franco 37.286
15	99	GARFIAS José 37.294
16	26	SAUCY Grégoire 37.295
17	46	MINI Gabriele 37.302
18	5	PASMA Patrik 37.335
19	64	BOYA Mari 37.366
20	22	MALONEY Zane 37.384
21	97	MEGUETOUNIF Sami 37.391
22	21	QUINN Alex 37.398
23	41	PESCE Emidio 37.466
24	77	VAN'T HOFF Dilano 37.489
25	2	GOHLER Nico 37.524
26	11	PETECOF Gianluca 37.571
27	96	GOETHE Oliver 37.617
28	91	BARRICHELLO Eduardo 37.626
29	14	MARINANGELI Nicola 37.660
30	25	BARDINON Alexandre 37.712
31	16	SMITH Tommy 37.758
32	62	FLUXA Lorenzo 37.768
33	13	FERATI Jasin 37.811
34	7	GNOS Axel 37.924
35	89	DEUKMEDJIAN Arias 38.199
36	15	BUHLER Léna 38.231





ACI Racing Weekend Mugello, 09-10 Ottobre 2021

Ideal Times Collective Test 2

Aut.Int. Mugello 5.245 m

1 / 2

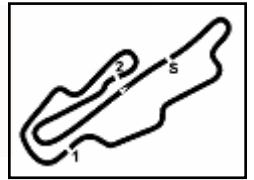
No.	Driver	Car	Seg. 1	Seg. 2	Seg. 3	Ideal Time		
			Diff. 1	Diff. 2	Diff. 3	Best Lap	Pos.	Diff.
1	1 ARON P. (EST)	Formula Alpine	35.619 +0.095	30.101	36.963	1'42.683 1'42.778	1	0.095
2	30 BELOV M. (RUS)	Formula Alpine	35.701 +0.033	30.059	36.981 +0.113	1'42.741 1'42.887	2	0.146
3	17 BEGANOVIC D. (SWE)	Formula Alpine	35.786 +0.153	30.059 +0.001	36.966	1'42.811 1'42.965	3	0.154
4	12 VIDALES D. (ESP)	Formula Alpine	35.795 +0.034	30.378	37.107 +0.053	1'43.280 1'43.367	5	0.087
5	8 ALATALO W. (FIN)	Formula Alpine	35.756 +0.334	30.378	37.203	1'43.337 1'43.671	7	0.334
6	35 DELLI GUANTI P. (ITA)	Formula Alpine	35.876	30.467	36.998	1'43.341 1'43.341	4	
7	64 BOYA M. (ESP)	Formula Alpine	35.808 +0.094	30.192	37.366	1'43.366 1'43.460	6	0.094
8	26 SAUCY G. (CHE)	Formula Alpine	35.855 +0.157	30.418	37.295 +0.128	1'43.568 1'43.853	10	0.285
9	85 BORTOLETO G. (BRA)	Formula Alpine	35.960 +0.084	30.480 +0.006	37.235	1'43.675 1'43.765	8	0.090
10	33 COHEN I. (ISR)	Formula Alpine	36.171 +0.034	30.324	37.259 +0.074	1'43.754 1'43.862	11	0.108
11	46 MINI G. (ITA)	Formula Alpine	36.019 +0.157	30.445	37.302	1'43.766 1'43.923	12	0.157
12	21 QUINN A. (GBR)	Formula Alpine	36.016 +0.021	30.366	37.398 +0.188	1'43.780 1'43.989	15	0.209
13	6 HADJAR I. (FRA)	Formula Alpine	35.998	30.522 +0.019	37.277	1'43.797 1'43.816	9	0.019
14	10 DAVID H. (FRA)	Formula Alpine	36.119 +0.093	30.446 +0.084	37.282	1'43.847 1'44.024	16	0.177
15	51 PIZZI F. (ITA)	Formula Alpine	36.094 +0.148	30.532	37.248 +0.070	1'43.874 1'44.092	17	0.218
16	19 ROSSO A. (ITA)	Formula Alpine	36.030 +0.068	30.681 +0.059	37.195 +0.100	1'43.906 1'44.133	18	0.227
17	97 MEGUETOUNIF S. (FRA)	Formula Alpine	36.081 +0.320	30.471 +0.247	37.391	1'43.943 1'44.510	22	0.567
18	43 COLAPINTO F. (ARG)	Formula Alpine	36.012	30.663	37.286	1'43.961 1'43.961	13	
19	5 PASMA P. (FIN)	Formula Alpine	35.999 +0.208	30.652 +0.028	37.335 +0.038	1'43.986 1'44.260	19	0.274
20	27 HAVERKORT K. (NED)	Formula Alpine	36.071	30.672	37.246	1'43.989 1'43.989	14	
21	22 MALONEY Z. (BAR)	Formula Alpine	36.120 +0.245	30.643	37.384 +0.087	1'44.147 1'44.479	21	0.332
22	11 PETECOF G. (BRA)	Formula Alpine	36.155 +0.038	30.643	37.571	1'44.369 1'44.407	20	0.038
23	77 VAN'T HOFF D. (NED)	Formula Alpine	36.339	30.597 +0.048	37.489 +0.125	1'44.425 1'44.598	24	0.173
24	99 GARFIAS J. (MEX)	Formula Alpine	36.158	30.993	37.294 +0.101	1'44.445 1'44.546	23	0.101
25	96 GOETHE O. (DNK)	Formula Alpine	36.229 +0.028	30.731	37.617 +0.077	1'44.577 1'44.682	25	0.105
26	2 GOHLER N. (GER)	Formula Alpine	36.288 +0.147	30.847	37.524	1'44.659 1'44.806	26	0.147
27	14 MARINANGELI N. (ITA)	Formula Alpine	36.232 +0.207	30.946 +0.051	37.660	1'44.838 1'45.096	27	0.258
28	41 PESCE E. (ITA)	Formula Alpine	36.369 +0.197	31.020 +0.110	37.466	1'44.855 1'45.162	29	0.307
29	62 FLUXA L. (ESP)	Formula Alpine	36.377 +0.217	30.756	37.768	1'44.901 1'45.118	28	0.217
30	91 BARRICHELLO E. (BRA)	Formula Alpine	36.393	31.198	37.626 +0.148	1'45.217 1'45.365	31	0.148
31	7 GNOS A. (CHE)	Formula Alpine	36.386 +0.125	30.981 +0.147	37.924 +0.052	1'45.291 1'45.615	33	0.324
32	13 FERATI J. (CHE)	Formula Alpine	36.609	30.921	37.811	1'45.341 1'45.341	30	
33	16 SMITH T. (AUS)	Formula Alpine	36.448	31.172	37.758 +0.135	1'45.378 1'45.513	32	0.135

08/10/2021



Powered by FICr PERUGIA TIMING





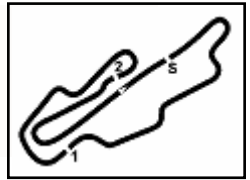
ACI Racing Weekend Mugello, 09-10 Ottobre 2021

Ideal Times Collective Test 2

 Aut.Int. Mugello 5.245 m
2 / 2

No. Driver	Car	Seg. 1	Seg. 2	Seg. 3	Ideal Time			
		Diff. 1	Diff. 2	Diff. 3	Best Lap	Pos.	Diff.	
34	25 BARDINON A. (FRA)	Formula Alpine	36.473 +0.190	31.470	37.712	1'45.655 1'45.845	34	0.190
35	89 DEUKMEDJIAN A. (USA)	Formula Alpine	37.285 +0.024	31.603 +0.127	38.199	1'47.087 1'47.238	35	0.151
36	15 BUHLER L. (CHE)	Formula Alpine	37.297	31.913	38.231	1'47.441 1'47.441	36	
Overall Ideal Time			35.619	35.619	30.059	36.963	1'42.641	




ACI Racing Weekend Mugello, 09-10 Ottobre 2021
Analysis Collective Test 2

Aut.Int. Mugello 5.245 m

4 / 6

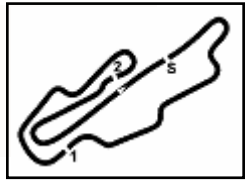
27 K. HAVERKORT (1'43.989)							35 P. DELLI GUANTI (1'43.341)						
Lap	Seg.1	Seg.2	Seg.3	Lap Time	km/h	Local Time	Lap	Seg.1	Seg.2	Seg.3	Lap Time	km/h	Local Time
1						14:15'25.646	2	58.857	50.283	10'21.879	12'11.019P	150,8	14:28'10.320
2	58.607	42.623	11'37.357	13'18.587P	135,0	14:28'44.233	3	54.859	38.465	41.557	2'14.881P	139,0	14:30'25.201
3	52.722	38.037	41.402	2'12.161P	158,8	14:30'56.394	4	39.685	32.138	39.330	1'51.153	208,1	14:32'16.354
4	39.189	33.536	40.004	1'52.729	218,6	14:32'49.123	5	36.374	30.801	37.237	1'44.412	234,8	14:34'00.766
5	36.873	30.983	37.320	1'45.176	233,8	14:34'34.299	6	36.556	37.708	38.390	1'52.654	239,5	14:35'53.420
6	36.500	30.844	37.396	1'44.740	232,3	14:36'19.039	7	36.234	30.829	37.438	1'44.501	232,3	14:37'37.921
7	36.407	30.905	37.579	1'44.891	228,3	14:38'03.930	8	36.374	34.267	40.144	1'50.785	233,3	14:39'28.706
8	36.217	31.142	37.554	1'44.913	229,8	14:39'48.843	9	36.260	39.168	10'50.717	12'06.145P	234,8	14:51'34.851
9	43.687	38.276	9'13.888	10'35.851P	231,3	14:50'24.694	10	1'02.376	37.713	39.864	2'19.953P	143,6	14:53'54.804
10	56.551	40.670	42.635	2'19.856P	152,8	14:52'44.550	11	41.181	36.827	37.831	1'55.839	196,0	14:55'50.643
11	41.631	33.570	38.947	1'54.148	224,5	14:54'38.698	12	35.876	30.467	36.998	1'43.341	234,8	14:57'33.984
12	37.428	31.427	50.314	1'59.169	230,3	14:56'37.867	13	36.007	30.720	37.352	1'44.079	234,3	14:59'18.063
13	36.118	30.684	41.756	1'48.558	232,3	14:58'26.425	14	36.219	36.912	43.012	1'56.143	236,3	15:01'14.206
14	36.136	30.901	37.398	1'44.435	234,3	15:00'10.860	15	36.148	32.252	1'31.593	2'39.993P	234,3	15:03'54.199
15	41.012	34.454	39.139	1'54.605	234,3	15:02'05.465							
16	36.724	31.609	44.269	1'52.602	233,8	15:03'58.067							
17	36.071	30.672	37.246	1'43.989	234,8	15:05'42.056							
30 M. BELOV (1'42.887)							41 E. PESCE (1'45.162)						
Lap	Seg.1	Seg.2	Seg.3	Lap Time	km/h	Local Time	Lap	Seg.1	Seg.2	Seg.3	Lap Time	km/h	Local Time
1						14:15'56.420	2	1'01.201	50.201	9'59.532	11'50.934P	147,3	14:27'47.354
2	1'03.110	43.861	10'06.961	11'53.932P	157,0	14:27'29.008	3	51.429	36.606	39.481	2'07.516P	159,5	14:29'54.870
3	53.882	37.509	41.125	2'12.516P	165,1	14:29'41.524	4	38.343	33.002	38.303	1'49.648	229,3	14:31'44.518
4	41.386	39.216	38.434	1'59.036	218,6	14:31'40.560	5	36.936	31.776	46.865	1'55.577	234,3	14:33'40.095
5	37.268	32.962	42.222	1'52.452	233,3	14:33'33.012	6	36.659	31.831	37.667	1'46.157	235,8	14:35'26.252
6	36.108	30.763	37.302	1'44.173	234,3	14:35'17.185	7	36.841	31.800	38.016	1'46.657	232,8	14:37'12.909
7	36.022	30.686	37.509	1'44.217	239,5	14:37'01.402	8	37.578	32.620	41.648	1'51.846	235,8	14:39'04.755
8	42.219	37.130	38.963	1'58.312	223,1	14:38'59.714	9	36.983	31.695	10'46.303	11'54.981P	234,8	14:50'59.736
9	36.317	31.876	10'24.497	11'32.690P	234,8	14:50'32.404	10	1'12.675	36.245	40.267	2'29.187P	161,7	14:53'28.923
10	1'03.945	39.601	41.788	2'25.334P	148,4	14:52'57.738	11	38.404	33.273	38.705	1'50.382	229,8	14:55'19.305
11	39.926	34.270	38.726	1'52.922	218,6	14:54'50.660	12	37.138	31.552	39.386	1'48.076	232,8	14:57'07.381
12	37.458	31.563	49.582	1'58.603	235,8	14:56'49.263	13	36.369	31.020	37.788	1'45.177	231,8	14:58'52.558
13	35.701	30.327	36.981	1'43.009	231,3	14:58'32.272	14	36.535	31.363	37.732	1'45.630	235,8	15:00'38.188
14	37.952	34.232	38.287	1'50.471	233,3	15:00'22.743	15	36.598	31.450	39.557	1'47.605	237,4	15:02'25.793
15	35.747	30.209	37.015	1'42.971	234,3	15:02'05.714	16	36.569	32.153	40.431	1'49.153	234,3	15:04'14.946
16	39.906	36.375	39.150	1'55.431	241,1	15:04'01.145	17	36.566	31.130	37.466	1'45.162	236,8	15:06'00.108
17	35.734	30.059	37.094	1'42.887	234,3	15:05'44.032							
33 I. COHEN (1'43.862)							43 F. COLAPINTO (1'43.961)						
Lap	Seg.1	Seg.2	Seg.3	Lap Time	km/h	Local Time	Lap	Seg.1	Seg.2	Seg.3	Lap Time	km/h	Local Time
1						14:15'47.064	2	59.356	42.543	10'16.310	11'58.209P	136,0	14:27'22.173
2	1'02.583	51.073	10'07.811	12'01.467P	158,4	14:27'48.531	3	51.617	36.280	40.626	2'08.523P	165,1	14:29'30.696
3	58.340	41.161	43.190	2'22.691P	145,0	14:30'11.222	4	41.325	34.725	40.678	1'56.728	223,6	14:31'27.424
4	41.803	34.136	39.101	1'55.040	225,5	14:32'06.262	5	36.959	34.420	42.113	1'53.492	233,3	14:33'20.916
5	38.161	33.280	39.771	1'51.212	228,8	14:33'57.474	6	36.443	31.631	37.778	1'45.852	235,3	14:35'06.768
6	36.689	30.855	37.259	1'44.803	234,3	14:35'42.277	7	36.306	30.929	37.607	1'44.842	232,8	14:36'51.610
7	36.255	30.681	37.652	1'44.588	231,8	14:37'26.865	8	36.272	30.868	39.884	1'47.024	231,8	14:38'38.634
8	40.081	37.124	40.427	1'57.632	232,3	14:39'24.497	9	38.139	34.309	10'31.686	11'44.134P	233,3	14:50'22.768
9	36.334	40.468	10'21.589	11'38.391P	232,3	14:51'02.888	10	57.833	40.351	42.150	2'20.334P	142,9	14:52'43.102
10	1'06.568	37.453	40.473	2'24.494P	145,4	14:53'27.382	11	44.395	35.665	39.329	1'59.389	165,9	14:54'42.491
11	39.229	35.004	40.371	1'54.604	230,8	14:55'21.986	12	37.625	32.673	41.512	1'51.810	230,3	14:56'34.301
12	39.534	40.291	41.197	2'01.022	230,8	14:57'23.008	13	36.086	31.346	38.117	1'45.549	233,8	14:58'19.850
13	36.778	32.187	38.311	1'47.276	232,3	14:59'10.284	14	36.012	30.663	37.286	1'43.961	235,3	15:00'03.811
14	36.205	30.324	37.333	1'43.862	232,8	15:00'54.146	15	37.248	33.875	40.255	1'51.378	236,3	15:01'55.189
15			38.234	1'50.376	234,3	15:02'44.522	16	36.069	31.065	39.135	1'46.269	235,3	15:03'41.458
16	36.243	30.562	37.319	1'44.124	234,8	15:04'28.646	17	36.199	31.348	38.114	1'45.661	236,3	15:05'27.119
46 G. MINI (1'43.923)							43 F. COLAPINTO (1'43.961)						
Lap	Seg.1	Seg.2	Seg.3	Lap Time	km/h	Local Time	Lap	Seg.1	Seg.2	Seg.3	Lap Time	km/h	Local Time
1						14:15'05.255							

08/10/2021

P = Pits In/Out - C = Lap Time Cancelled



Powered by FICR PERUGIA TIMING



Aut.Int. Mugello 5.245 m

5 / 6

Lap	Seg.1	Seg.2	Seg.3	Lap Time	km/h	Local Time
2	1'03.044	46.033	1'14.021	3'03.098CP	157,9	14:18'08.353
3			4.063CP			14:18'12.416
4			8'52.070P			14:27'04.486
5	57.066	37.497	41.709	2'16.272P	164,1	14:29'20.758
6	41.555	35.287	40.918	1'57.760	160,5	14:31'18.518
7	40.264	34.504	38.634	1'53.402	180,6	14:33'11.920
8	36.390	30.937	37.392	1'44.719	233,8	14:34'56.639
9	36.406	36.594	39.171	1'52.171	231,8	14:36'48.810
10	36.340	30.723	37.399	1'44.462	231,8	14:38'33.272
11	38.557	35.006	1'00.957	2'14.520CP	233,3	14:40'47.792
12			9'16.371P			14:50'04.163
13	58.461	37.414	41.133	2'17.008P	155,8	14:52'21.171
14	39.725	35.081	39.397	1'54.203	204,9	14:54'15.374
15	38.442	33.436	44.752	1'56.630	223,6	14:56'12.004
16	36.429	31.229	37.445	1'45.103	233,3	14:57'57.107
17	36.098	30.654	37.374	1'44.126	231,8	14:59'41.233
18	36.019	36.407	46.322	1'58.748	232,8	15:01'39.981
19	36.236	30.655	37.417	1'44.308	233,3	15:03'24.289
20	36.176	30.445	37.302	1'43.923	234,8	15:05'08.212

77 D. VAN'T HOFF (1'44.598)

Lap	Seg.1	Seg.2	Seg.3	Lap Time	km/h	Local Time
1						14:15'27.945
2	57.654	44.831	10'14.847	11'57.332P	133,3	14:27'25.277
3	51.498	37.325	40.919	2'09.742P	160,2	14:29'35.019
4	39.867	35.550	39.570	1'54.987	222,7	14:31'30.006
5	37.564	32.297	41.868	1'51.729	234,3	14:33'21.735
6	36.738	31.222	37.489	1'45.449	233,3	14:35'07.184
7	36.586	31.036	37.780	1'45.402	233,3	14:36'52.586
8	37.396	32.181	38.830	1'48.407	232,8	14:38'40.993
9	36.786	31.198	10'38.361	11'46.345P	230,8	14:50'27.338
10	54.690	40.857	42.836	2'18.383P	141,0	14:52'45.721
11	42.478	36.035	40.095	1'58.608	194,2	14:54'44.329
12	37.386	32.448	47.871	1'57.705	226,9	14:56'42.034
13	36.598	30.597	37.575	1'44.770	229,8	14:58'26.804
14	36.382	30.954	39.387	1'46.723	234,3	15:00'13.527
15	36.509	32.065	39.642	1'48.216	233,8	15:02'01.743
16	36.349	30.750	40.346	1'47.445	232,3	15:03'49.188
17	36.339	30.645	37.614	1'44.598	233,3	15:05'33.786

85 G. BORTOLETO (1'43.765)

Lap	Seg.1	Seg.2	Seg.3	Lap Time	km/h	Local Time
1						14:15'54.708
2	1'00.983	50.770	9'57.665	11'49.418P	160,5	14:27'44.126
3	50.859	37.239	56.374	2'24.472P	167,4	14:30'08.598
4	59.095	33.233	38.264	2'10.592P	161,4	14:32'19.190
5	36.693	32.055	37.628	1'46.376	234,3	14:34'05.566
6	38.389	32.267	39.622	1'50.278	236,3	14:35'55.844
7	36.365	31.093	37.621	1'45.079	231,3	14:37'40.923
8	41.004	36.628	42.858	2'00.490	210,1	14:39'41.413
9	39.404	42.777	9'38.978	11'01.159P	232,8	14:50'42.572
10	1'06.674	36.501	40.190	2'23.365P	168,2	14:53'05.937
11	38.250	32.488	38.329	1'49.067	228,3	14:54'55.004
12	37.029	32.231	50.140	1'59.400	232,8	14:56'54.404
13	36.294	30.850	43.541	1'50.685	232,8	14:58'45.089
14	36.044	30.486	37.235	1'43.765	234,3	15:00'28.854
15	42.116	38.791	42.371	2'03.278	206,9	15:02'32.132
16	35.960	30.480	41.932	1'48.372	235,8	15:04'20.504
17	36.028	30.964	1'07.794	2'14.786CP	236,8	15:06'35.290

89 A. DEUKMEDJIAN (1'47.238)

Lap	Seg.1	Seg.2	Seg.3	Lap Time	km/h	Local Time
1						14:16'00.901
2	58.081	50.343	10'03.772	11'52.196P	164,6	14:27'53.097

64 M. BOYA (1'43.460)

Lap	Seg.1	Seg.2	Seg.3	Lap Time	km/h	Local Time
-----	-------	-------	-------	----------	------	------------

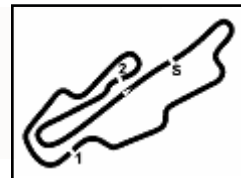
08/10/2021

P = Pits In/Out - C = Lap Time Cancelled



Powered by FICR PERUGIA TIMING





Aut.Int. Mugello 5.245 m

6 / 6

3	53.970	38.919	41.810	2'14.699P	165,1	14:30'07.796	8	37.064	40.090	1'07.469	2'24.623P	232,8	14:41'42.602
4	40.259	33.979	39.082	1'53.320	214,7	14:32'01.116	9	9'20.493	38.147	40.574	10'39.214P	142,7	14:52'21.816
5	38.563	31.797	38.286	1'48.646	222,7	14:33'49.762	10	41.020	34.150	39.524	1'54.694	223,1	14:54'16.510
6	53.741	34.341	39.263	2'07.345	231,3	14:35'57.107	11	39.497	33.885	44.381	1'57.763	213,9	14:56'14.273
7	37.501	31.988	38.507	1'47.996	225,0	14:37'45.103	12	37.037	33.824	39.359	1'50.220	237,4	14:58'04.493
8	37.309	31.730	38.199	1'47.238	225,5	14:39'32.341	13	36.230	30.790	39.249	1'46.269	231,8	14:59'50.762
9	37.285	35.865	10'05.797	11'18.947P	226,4	14:50'51.288	14	36.081	30.471	44.170	1'50.722	233,3	15:01'41.484
10	1'09.206	39.550	41.555	2'30.311P	135,8	14:53'21.599	15	45.980	39.408	44.117	2'09.505	189,5	15:03'50.989
11	38.653	33.553	38.765	1'50.971	221,3	14:55'12.570	16	36.401	30.718	37.391	1'44.510	233,3	15:05'35.499
12	37.700	31.603	40.920	1'50.223	222,7	14:57'02.793							
13	51.919			1'37.101P	226,4	14:58'39.894							

99 J. GARFIAS (1'44.546)

91 E. BARRICHELLO (1'45.365)

Lap	Seg.1	Seg.2	Seg.3	Lap Time	km/h	Local Time
1						14:15'52.155
2	1'02.707	50.236	10'06.332	11'59.275P	157,9	14:27'51.430
3	52.695	35.768	39.860	2'08.323P	154,1	14:29'59.753
4	39.180	33.595	39.960	1'52.735	226,9	14:31'52.488
5	36.921	31.912	45.025	1'53.858	235,3	14:33'46.346
6	36.699	31.696	37.790	1'46.185	235,8	14:35'32.531
7	38.513	31.628	39.532	1'49.673	231,3	14:37'22.204
8	40.159	33.459	38.982	1'52.600	232,8	14:39'14.804
9	37.065	36.031	10'49.814	12'02.910P	232,8	14:51'17.714
10	1'07.143	35.805	39.225	2'22.173P	130,3	14:53'39.887
11	38.124	32.070	37.632	1'47.826	225,5	14:55'27.713
12	36.594	32.192	38.645	1'47.431	233,8	14:57'15.144
13	37.077	31.957	37.626	1'46.660	234,3	14:59'01.804
14	36.393	31.198	37.774	1'45.365	234,8	15:00'47.169
15	36.666	31.311	37.745	1'45.722	233,8	15:02'32.891
16	36.719	31.384	37.844	1'45.947	237,4	15:04'18.838
17	36.573	31.658	37.720	1'45.951	235,8	15:06'04.789

Lap	Seg.1	Seg.2	Seg.3	Lap Time	km/h	Local Time
1						14:16'05.274
2	57.162	48.066	10'24.519	12'09.747P	125,0	14:28'15.021
3	55.553	38.110	41.061	2'14.724P	134,7	14:30'29.745
4	40.644	34.087	38.623	1'53.354	204,9	14:32'23.099
5	37.940	31.579	37.294	1'46.813	232,3	14:34'09.912
6	36.639	31.734	39.719	1'48.092	234,3	14:35'58.004
7	37.129	33.343	40.001	1'50.473	234,3	14:37'48.477
8	36.562	31.537	37.606	1'45.705	233,8	14:39'34.182
9	37.078	36.078	10'21.625	11'34.781P	233,8	14:51'08.963
10	1'14.274	36.554	39.877	2'30.705P	133,8	14:53'39.668
11	39.861	32.167	37.348	1'49.376	201,5	14:55'29.044
12	36.769	31.166	37.360	1'45.295	236,3	14:57'14.339
13	36.872	31.034	37.315	1'45.221	233,8	14:58'59.560
14	36.158	30.993	37.395	1'44.546	234,3	15:00'44.106
15	36.358	30.998	37.535	1'44.891	236,3	15:02'28.997
16	42.633	34.741	40.076	1'57.450	220,9	15:04'26.447
17	36.401	31.165	37.475	1'45.041	236,3	15:06'11.488

96 O. GOETHE (1'44.682)

Lap	Seg.1	Seg.2	Seg.3	Lap Time	km/h	Local Time
1						14:15'27.042
2	58.090	43.559	10'15.511	11'57.160P	137,4	14:27'24.202
3	51.716	37.019	40.016	2'08.751P	162,2	14:29'32.953
4	40.814	34.953	40.386	1'56.153	225,9	14:31'29.106
5	37.553	32.943	43.317	1'53.813	232,3	14:33'22.919
6	36.846	31.378	37.733	1'45.957	236,8	14:35'08.876
7	36.852	31.126	37.965	1'45.943	232,3	14:36'54.819
8	36.940	32.808	39.131	1'48.879	230,8	14:38'43.698
9	36.830	31.402	10'34.429	11'42.661P	233,8	14:50'26.359
10	55.318	40.720	42.671	2'18.709P	147,1	14:52'45.068
11	40.152	33.443	38.575	1'52.170	225,0	14:54'37.238
12	37.608	31.324	49.567	1'58.499	228,3	14:56'35.737
13	36.257	30.731	37.694	1'44.682	232,8	14:58'20.419
14	36.353	32.350	38.948	1'47.651	237,4	15:00'08.070
15	36.229	31.054	37.803	1'45.086	235,3	15:01'53.156
16	36.834	35.214	42.912	1'54.960	235,3	15:03'48.116
17	36.394	30.997	37.617	1'45.008	236,8	15:05'33.124

97 S. MEGUETOUNIF (1'44.510)

Lap	Seg.1	Seg.2	Seg.3	Lap Time	km/h	Local Time
1		45.682	1'10.949	C	145,9	14:18'04.035
2	11'05.407	34.686	39.005	12'19.098P	145,2	14:30'23.133
3	37.907	31.706	37.824	1'47.437	224,1	14:32'10.570
4	37.054	32.219	40.302	1'49.575	230,3	14:34'00.145
5	36.643	31.309	37.708	1'45.660	233,3	14:35'45.805
6	37.093	31.237	38.020	1'46.350	228,8	14:37'32.155
7	36.786	31.270	37.768	1'45.824	230,8	14:39'17.979

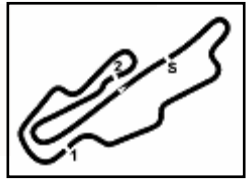
08/10/2021

P = Pits In/Out - C = Lap Time Cancelled



Powered by FICR PERUGIA TIMING





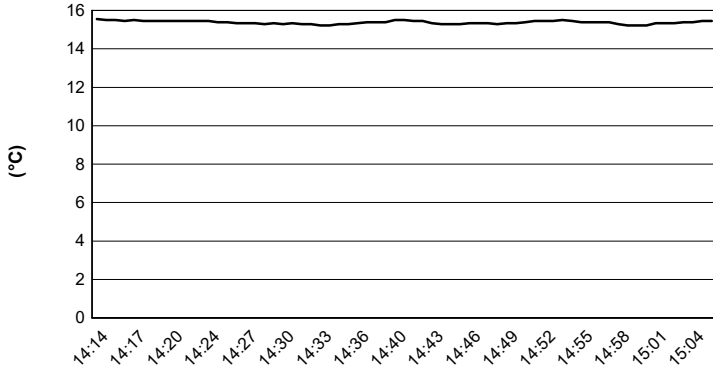
Aut.Int. Mugello 5.245 m

ACI Racing Weekend Mugello, 09-10 Ottobre 2021

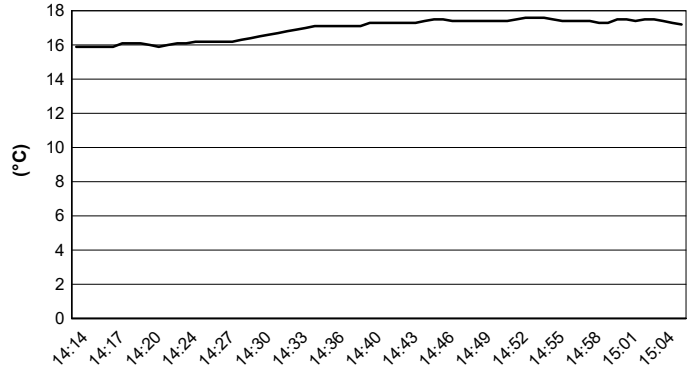
Weather Report Collective Test 2

Session started 14:15 - Session ended 15:07

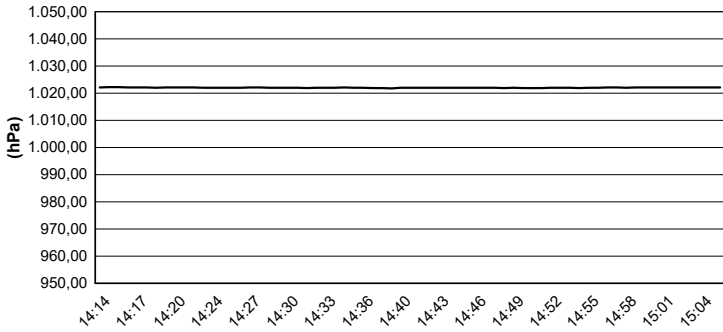
Air Temperature



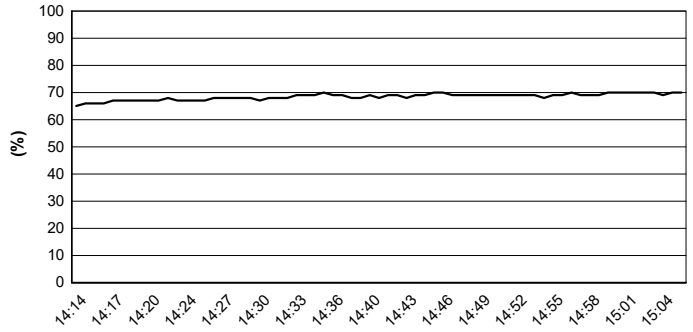
Track Temperature



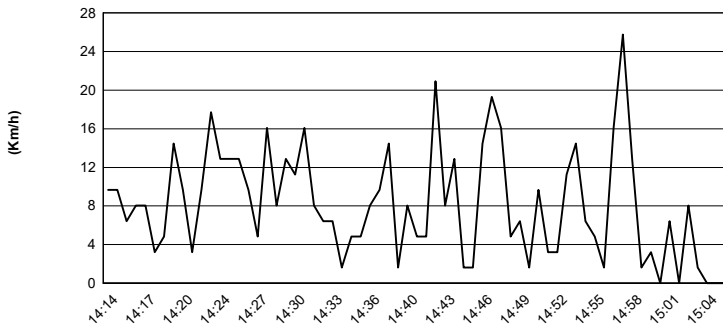
Air Pressure



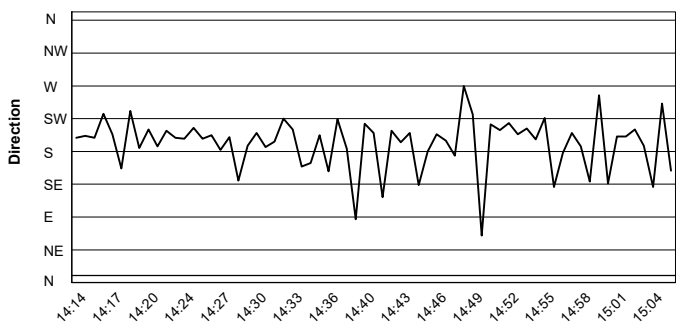
Humidity



Wind Speed



Wind Direction



08/10/2021

