

ACI Racing Weekend Imola, 22-23 Aprile 2023

Results Collective Test 2

Imola Circuit 4.909 m

1 / 2

No.	Driver	Nat	Entrant	Team	Car	Class	Time	Gap	Rel.	Laps
1	77 TRAMNITZ Tim	DEU	R-ace GP	R-ace GP (FRA)	Tatuus FR-19		1'39.036			20
2	47 BOHRA Nikhil	SGP	Trident	Trident (ITA)	Tatuus FR-19		1'39.324	0.288	0.288	18
3	34 STENSHORNE Martinus	NOR	R-ace GP	R-ace GP (FRA)	Tatuus FR-19	R	1'39.328	0.292	0.004	19
4	12 ANTONELLI Andrea Kimi	ITA	Prema Racing	Prema Racing (ITA)	Tatuus FR-19		1'39.328	0.292		18
5	4 BILINSKI Roman	POL	Trident	Trident (ITA)	Tatuus FR-19		1'39.428	0.392	0.100	19
6	27 HAVERKORT Kas	NLD	Van Amersfoort Racing	Van Amersfoort Racing (NLD)	Tatuus FR-19		1'39.543	0.507	0.115	21
7	26 BERNIER Victor	FRA	MP Motorsport	MP Motorsport (NLD)	Tatuus FR-19		1'39.611	0.575	0.068	19
8	43 TANGAVELOU Owen	FRA	Trident	Trident (ITA)	Tatuus FR-19		1'39.649	0.613	0.038	17
9	15 MEGUETOUNIF Sami	FRA	MP Motorsport	MP Motorsport (NLD)	Tatuus FR-19		1'39.717	0.681	0.068	17
10	65 RAMOS Santiago	MEX	RPM	RPM (ITA)	Tatuus FR-19		1'39.721	0.685	0.004	17
11	8 CÂMARA Rafael	BRA	Prema Racing	Prema Racing (ITA)	Tatuus FR-19		1'39.836	0.800	0.115	19
12	18 VAN HOEPEN Laurens	NLD	ART Grand Prix	ART Grand Prix (FRA)	Tatuus FR-19		1'39.853	0.817	0.017	19
13	3 GIUSTI Alessandro	FRA	G4 Racing	G4 Racing (CHE)	Tatuus FR-19	R	1'39.870	0.834	0.017	18
14	30 BELOV Michael		G4 Racing	G4 Racing (CHE)	Tatuus FR-19		1'39.875	0.839	0.005	18
15	7 FLUXÁ Lorenzo	ESP	Prema Racing	Prema Racing (ITA)	Tatuus FR-19		1'39.878	0.842	0.003	18
16	13 DUFEK Joshua	CHE	Van Amersfoort Racing	Van Amersfoort Racing (NLD)	Tatuus FR-19		1'39.905	0.869	0.027	21
17	88 ZAGAZETA Matias	PER	R-ace GP	R-ace GP (FRA)	Tatuus FR-19		1'39.913	0.877	0.008	19
18	85 CAPIETTO Macéo	FRA	RPM	RPM (ITA)	Tatuus FR-19		1'40.081	1.045	0.168	18
19	64 WEUG Maya	ESP	KIC Motorsport	KIC Motorsport (FIN)	Tatuus FR-19	R	1'40.347	1.311	0.266	18
20	9 WURZ Charlie	AUT	ART Grand Prix	ART Grand Prix (FRA)	Tatuus FR-19		1'40.499	1.463	0.152	19
21	25 AMAND Marcus	FRA	ART Grand Prix	ART Grand Prix (FRA)	Tatuus FR-19	R	1'40.522	1.486	0.023	18
22	17 VAN'T HOFF Dilano	NLD	MP Motorsport	MP Motorsport (NLD)	Tatuus FR-19		1'40.543	1.507	0.021	20
23	73 FITTIPALDI Emerson Jr	BRA	Saintéloc Racing	Saintéloc Racing (FRA)	Tatuus FR-19	R	1'40.633	1.597	0.090	21
24	55 LUGASSY Shannon	CHE	KIC Motorsport	KIC Motorsport (FIN)	Tatuus FR-19	R	1'40.710	1.674	0.077	18
25	23 PARTYSHEV Oleksandr	UKR	KIC Motorsport	KIC Motorsport (FIN)	Tatuus FR-19	R	1'40.728	1.692	0.018	18
26	5 LEBBON Tom	GBR	Arden Motorsport	Arden Motorsport (GBR)	Tatuus FR-19	R	1'40.883	1.847	0.155	18
27	10 DÛRKSEN Joshua	PAR	Arden Motorsport	Arden Motorsport (GBR)	Tatuus FR-19		1'41.176	2.140	0.293	4
28	11 RÉVÉSZ Levente	HUN	Arden Motorsport	Arden Motorsport (GBR)	Tatuus FR-19		1'41.303	2.267	0.127	17
29	29 SCIONTI Enzo	USA	Monolite Racing	Monolite Racing (ITA)	Tatuus FR-19		1'41.400	2.364	0.097	20
30	75 FITZGERALD Adam	IRL	RPM	RPM (ITA)	Tatuus FR-19	R	1'41.624	2.588	0.224	18
31	99 MASCHIO Giovanni	ITA	Monolite Racing	Monolite Racing (ITA)	Tatuus FR-19		1'41.890	2.854	0.266	12
32	68 KOOLEN Niels	NLD	Van Amersfoort Racing	Van Amersfoort Racing (NLD)	Tatuus FR-19		1'42.322	3.286	0.432	21
33	6 MEDINA Lucas	COL	Saintéloc Racing	Saintéloc Racing (FRA)	Tatuus FR-19	R	1'42.962	3.926	0.640	15

Humidity:	57%	AIR	20°C
Condition:	DRY	Track	34°C

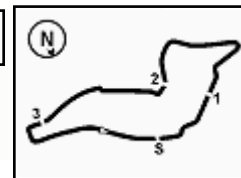
Clerk of the Course : Massimiliano Ghinassi

	Start	End
21/04/2023	15:13	16:06



Powered by FICr PERUGIA TIMING





ACI Racing Weekend Imola, 22-23 Aprile 2023

Results Collective Test 2

Penalty and Infringement

15.20	30	M. BELOV	Time Deleted (1'42.592) - Exceeded Track Limits - Turn 15
15.22	23	O. PARTYSHEV	Time Deleted (1'46.215) - Exceeded Track Limits - Turn 13
15.23	6	L. MEDINA	Time Deleted (1'44.356) - Exceeded Track Limits - Turn 13
15.23	7	L. FLUXÁ	Time Deleted (1'42.995) - Exceeded Track Limits - Turn 13
15.36	18	L. VAN HOEPEN	Time Deleted (1'40.601) - Exceeded Track Limits - Turn 9
15.59	4	R. BILINSKI	Time Deleted (1'40.114) - Exceeded Track Limits - Turn 13
16.01	34	M. STENSHORNE	Time Deleted (1'39.763) - Exceeded Track Limits - Turn 13
16.01	23	O. PARTYSHEV	Time Deleted (1'41.069) - Exceeded Track Limits - Turn 13

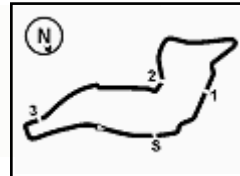
Fastest Laps Sequence

No.	Entrant	Nat	Team	Car	Local Time	Time	Gap	Avg
18	L. VAN HOEPEN	NLD	ART Grand Prix	Tatuus FR-19	15:18'06.573	1'48.185		163,354
25	M. AMAND	FRA	ART Grand Prix	Tatuus FR-19	15:18'07.554	1'47.004	-1.181	165,156
23	O. PARTYSHEV	UKR	KIC Motorsport	Tatuus FR-19	15:20'14.766	1'43.230	-3.774	171,194
43	O. TANGAVELOU	FRA	Trident	Tatuus FR-19	15:21'07.767	1'41.804	-1.426	173,592
47	N. BOHRA	SGP	Trident	Tatuus FR-19	15:21'18.504	1'41.301	-0.503	174,454
7	L. FLUXÁ	ESP	Prema Racing	Tatuus FR-19	15:22'02.306	1'41.292	-0.009	174,470
10	J. DÜRKSEN	PAR	Arden Motorsport	Tatuus FR-19	15:22'13.155	1'41.176	-0.116	174,670
12	A. ANTONELLI	ITA	Prema Racing	Tatuus FR-19	15:22'19.085	1'40.900	-0.276	175,148
47	N. BOHRA	SGP	Trident	Tatuus FR-19	15:22'59.257	1'40.753	-0.147	175,403
18	L. VAN HOEPEN	NLD	ART Grand Prix	Tatuus FR-19	15:23'25.056	1'40.500	-0.253	175,845
12	A. ANTONELLI	ITA	Prema Racing	Tatuus FR-19	15:23'59.539	1'40.454	-0.046	175,925
34	M. STENSHORNE	NOR	R-ace GP	Tatuus FR-19	15:34'09.493	1'40.408	-0.046	176,006
27	K. HAVERKORT	NLD	Van Amersfoort Racing	Tatuus FR-19	15:35'38.948	1'40.238	-0.170	176,304
77	T. TRAMNITZ	DEU	R-ace GP	Tatuus FR-19	15:39'07.792	1'39.966	-0.272	176,784
27	K. HAVERKORT	NLD	Van Amersfoort Racing	Tatuus FR-19	15:58'48.509	1'39.823	-0.143	177,037
77	T. TRAMNITZ	DEU	R-ace GP	Tatuus FR-19	15:59'29.117	1'39.380	-0.443	177,827
77	T. TRAMNITZ	DEU	R-ace GP	Tatuus FR-19	16:01'08.153	1'39.036	-0.344	178,444

Clerk of the Course : Massimiliano Ghinassi

	Start	End
21/04/2023	15:13	16:06





ACI Racing Weekend Imola, 22-23 Aprile 2023

Ideal Time Collective Test 2

Imola Circuit 4.909 m

1 / 2

No. Driver	Car	Seg. 1 Diff. 1	Seg. 2 Diff. 2	Seg. 3 Diff. 3	Seg. 4 Diff. 4	Ideal Time		
						Best Lap	Pos.	Diff.
1 77 TRAMNITZ T. (DEU)	Tatuus FR-19	21.230 +0.019	31.828	28.230	17.685 +0.044	1'38.973 1'39.036	1	0.063
2 47 BOHRA N. (SGP)	Tatuus FR-19	21.229	31.926	28.218 +0.001	17.790 +0.160	1'39.163 1'39.324	2	0.161
3 4 BILINSKI R. (POL)	Tatuus FR-19	21.346 +0.122	31.867	28.101 +0.119	17.864 +0.009	1'39.178 1'39.428	5	0.250
4 34 STENSHORNE M. (NOR)	Tatuus FR-19	21.093	31.937 +0.031	28.351 +0.023	17.807 +0.086	1'39.188 1'39.328	4	0.140
5 12 ANTONELLI A. (ITA)	Tatuus FR-19	21.367	31.879 +0.010	28.180 +0.035	17.857	1'39.283 1'39.328	3	0.045
6 27 HAVERKORT K. (NLD)	Tatuus FR-19	21.338	31.858 +0.012	28.302 +0.065	17.885 +0.083	1'39.383 1'39.543	6	0.160
7 26 BERNIER V. (FRA)	Tatuus FR-19	21.306 +0.054	31.978 +0.025	28.391	17.857	1'39.532 1'39.611	7	0.079
8 7 FLUXÁ L. (ESP)	Tatuus FR-19	21.404 +0.240	31.980	28.244 +0.059	17.951	1'39.579 1'39.878	15	0.299
9 43 TANGAVELOU O. (FRA)	Tatuus FR-19	21.176	32.151 +0.001	28.458 +0.060	17.803	1'39.588 1'39.649	8	0.061
10 65 RAMOS S. (MEX)	Tatuus FR-19	21.287 +0.067	32.039	28.459 +0.046	17.823	1'39.608 1'39.721	10	0.113
11 30 BELOV M.	Tatuus FR-19	21.414 +0.024	32.117	28.278	17.802 +0.240	1'39.611 1'39.875	14	0.264
12 13 DUFEK J. (CHE)	Tatuus FR-19	21.475 +0.121	31.905	28.338 +0.131	17.935	1'39.653 1'39.905	16	0.252
13 8 CÂMARA R. (BRA)	Tatuus FR-19	21.362 +0.166	32.120	28.311	17.871 +0.006	1'39.664 1'39.836	11	0.172
14 18 VAN HOEPEN L. (NLD)	Tatuus FR-19	21.351	32.101	28.396 +0.125	17.823 +0.057	1'39.671 1'39.853	12	0.182
15 15 MEGUETOUNIF S. (FRA)	Tatuus FR-19	21.368 +0.015	32.002	28.446	17.886	1'39.702 1'39.717	9	0.015
16 3 GIUSTI A. (FRA)	Tatuus FR-19	21.509 +0.068	32.036 +0.033	28.338	17.886	1'39.769 1'39.870	13	0.101
17 88 ZAGAZETA M. (PER)	Tatuus FR-19	21.367 +0.075	32.116	28.440	17.915	1'39.838 1'39.913	17	0.075
18 85 CAPIETTO M. (FRA)	Tatuus FR-19	21.480 +0.046	32.220 +0.019	28.377 +0.045	17.894	1'39.971 1'40.081	18	0.110
19 17 VAN'T HOFF D. (NLD)	Tatuus FR-19	21.303 +0.153	32.308 +0.081	28.665	17.943 +0.090	1'40.219 1'40.543	22	0.324
20 25 AMAND M. (FRA)	Tatuus FR-19	21.390 +0.059	32.300	28.551 +0.132	17.989 +0.101	1'40.230 1'40.522	21	0.292
21 64 WEUG M. (ESP)	Tatuus FR-19	21.487 +0.025	32.204	28.547	18.015 +0.069	1'40.253 1'40.347	19	0.094
22 9 WURZ C. (AUT)	Tatuus FR-19	21.409 +0.063	32.337 +0.006	28.586 +0.124	17.974	1'40.306 1'40.499	20	0.193
23 73 FITTIPALDI E. (BRA)	Tatuus FR-19	21.583 +0.024	32.361 +0.061	28.579	17.931 +0.094	1'40.454 1'40.633	23	0.179
24 55 LUGASSY S. (CHE)	Tatuus FR-19	21.594	32.346 +0.079	28.536	18.046 +0.109	1'40.522 1'40.710	24	0.188
25 23 PARTYSHEV O. (UKR)	Tatuus FR-19	21.492 +0.192	32.328	28.531	18.185	1'40.536 1'40.728	25	0.192
26 5 LEBBON T. (GBR)	Tatuus FR-19	21.554	32.502	28.848	17.979	1'40.883 1'40.883	26	
27 10 DÜRKSEN J. (PAR)	Tatuus FR-19	21.751 +0.047	32.405	28.673 +0.166	18.134	1'40.963 1'41.176	27	0.213
28 29 SCIONTI E. (USA)	Tatuus FR-19	21.699 +0.128	32.526 +0.061	28.797 +0.037	18.122 +0.030	1'41.144 1'41.400	29	0.256
29 11 RÉVÉSZ L. (HUN)	Tatuus FR-19	21.574 +0.146	32.477	28.929 +0.011	18.166	1'41.146 1'41.303	28	0.157
30 75 FITZGERALD A. (IRL)	Tatuus FR-19	21.771 +0.065	32.500 +0.158	28.955	18.107 +0.068	1'41.333 1'41.624	30	0.291
31 99 MASCHIO G. (ITA)	Tatuus FR-19	21.888	32.739 +0.056	28.962	18.245	1'41.834 1'41.890	31	0.056
32 68 KOOLEN N. (NLD)	Tatuus FR-19	22.002 +0.075	32.731 +0.122	28.999	18.288 +0.105	1'42.020 1'42.322	32	0.302
33 6 MEDINA L. (COL)	Tatuus FR-19	21.780 +0.394	32.973 +0.148	29.359	18.211 +0.097	1'42.323 1'42.962	33	0.639

21/04/2023



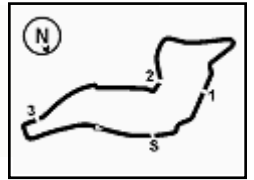
Powered by FICr PERUGIA TIMING



ALPINE



2.4



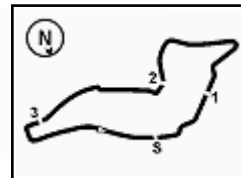
ACI Racing Weekend Imola, 22-23 Aprile 2023

Ideal Time Collective Test 2

Imola Circuit 4.909 m
2 / 2

No. Driver	Car	Seg. 1	Seg. 2	Seg. 3	Seg. 4	Ideal Time		
		Diff. 1	Diff. 2	Diff. 3	Diff. 4	Best Lap	Pos.	Diff.
Overall Ideal Time		21.093	31.828	28.101	17.685	1'38.707		





Imola Circuit 4.909 m

ACI Racing Weekend Imola, 22-23 Aprile 2023 Analysis Collective Test 2

4 / 6

Table with columns for Lap, Seg.1, Seg.2, Seg.3, Seg.4, Lap Time, km/h, Local Time. Rows 11 to 22.

29 E. SCIONTI (1'41.400)

Table with columns for Lap, Seg.1, Seg.2, Seg.3, Seg.4, Lap Time, km/h, Local Time. Rows 1 to 21.

43 O. TANGAVELOU (1'39.649)

Table with columns for Lap, Seg.1, Seg.2, Seg.3, Seg.4, Lap Time, km/h, Local Time. Rows 1 to 18.

30 M. BELOV (1'39.875)

Table with columns for Lap, Seg.1, Seg.2, Seg.3, Seg.4, Lap Time, km/h, Local Time. Rows 1 to 19.

47 N. BOHRA (1'39.324)

Table with columns for Lap, Seg.1, Seg.2, Seg.3, Seg.4, Lap Time, km/h, Local Time. Rows 1 to 19.

34 M. STENSHORNE (1'39.328)

Table with columns for Lap, Seg.1, Seg.2, Seg.3, Seg.4, Lap Time, km/h, Local Time. Rows 1 to 2.

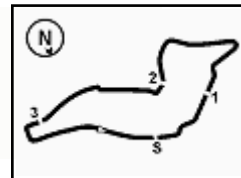
21/04/2023

P = Pits In/Out - C = Lap Time Cancelled



Powered by FICR PERUGIA TIMING





Imola Circuit 4.909 m

6 / 6

10	21.876	32.575	29.125	18.119	1'41.695	246,0	15:38'39.648	5	23.427	34.255	29.779	18.578	1'46.039	246,6	15:22'00.510
11	21.836	32.658	28.955	18.175	1'41.624	244,3	15:40'21.272	6	22.004	32.613	28.978	18.250	1'41.845	247,1	15:23'42.355
12	23.272	39.802	34.929	18.907	1'56.910	231,3	15:42'18.182	7	21.840	39.020	36.724	4'56.085	6'33.669P	248,3	15:30'16.024
13	22.040	32.668	29.032	18.107	1'41.847	243,2	15:44'00.029	8	41.946	36.103	36.483	20.345	2'14.877P	140,6	15:32'30.901
14	22.428	36.277	33.925	18.440	1'51.070	244,3	15:45'51.099	9	21.893	32.688	28.933	18.188	1'41.702	248,3	15:34'12.603
15	21.919	32.986	37.774	5'09.994	6'42.673P	242,2	15:52'33.772	10	21.717	32.397	28.755	18.092	1'40.961	246,6	15:35'53.564
16	49.478	35.919	32.403	18.527	2'16.327P	143,8	15:54'50.099	11	21.496	32.325	28.673	18.012	1'40.506	255,9	15:37'34.070
17	22.833	34.555	32.882	21.583	1'51.853	244,9	15:56'41.952	12	21.635	33.357	29.840	7'05.334	8'30.166P	257,8	15:46'04.236
18	22.019	34.025	31.002	18.429	1'45.475	246,6	15:58'27.427	13	51.144	47.855	45.757	3'45.309	6'10.065P	154,1	15:52'14.301
19	21.771	32.500	33.826	18.687	1'46.784	247,1	16:00'14.211	14	45.675	35.909	31.464	19.352	2'12.400P	149,2	15:54'26.701

77 T. TRAMNITZ (1'39.036)

Lap	Seg.1	Seg.2	Seg.3	Seg.4	Lap Time	km/h	Local Time
1							15:14'13.248
2	40.010	38.102	32.860	20.215	2'11.187P	164,6	15:16'24.435
3	24.766	35.723	31.102	19.342	1'50.933	218,2	15:18'15.368
4	22.974	33.797	36.496	20.947	1'54.214	237,9	15:20'09.582
5	22.370	32.856	29.209	18.522	1'42.957	240,5	15:21'52.539
6	21.627	32.482	28.555	17.985	1'40.649	250,6	15:23'33.188
7	21.471	35.328	34.875	5'07.894	6'39.568P	255,9	15:30'12.756
8	38.436	37.447	33.428	23.020	2'12.331P	179,1	15:32'25.087
9	21.787	32.375	28.545	18.326	1'41.033	248,3	15:34'06.120
10	21.463	32.251	28.464	19.200	1'41.378	255,3	15:35'47.498
11	21.602	32.250	28.523	17.953	1'40.328	251,2	15:37'27.826
12	21.431	32.099	28.502	17.934	1'39.966	256,5	15:39'07.792
13	21.404	32.249	28.557	5'14.298	6'36.508P	255,3	15:45'44.300
14	49.515	42.795	43.432	4'10.275	6'26.017P	166,4	15:52'10.317
15	41.840	36.095	31.158	19.205	2'08.298P	176,2	15:54'18.615
16	25.345	33.845	31.260	20.622	1'51.072	211,4	15:56'09.687
17	21.688	32.058	28.453	17.851	1'40.050	248,8	15:57'49.737
18	21.336	31.878	28.355	17.811	1'39.380	255,3	15:59'29.117
19	21.249	31.828	28.230	17.729	1'39.036	255,3	16:01'08.153
20	21.230	32.044	28.255	17.740	1'39.269	254,1	16:02'47.422
21	21.294	31.886	28.425	17.685	1'39.290	255,9	16:04'26.712

99 G. MASCHIO (1'41.890)

Lap	Seg.1	Seg.2	Seg.3	Seg.4	Lap Time	km/h	Local Time
1							15:14'32.776
2	41.849	36.372	34.240	19.244	2'11.705P	169,5	15:16'44.481
3	22.324	35.839	33.511	18.925	1'50.599	252,3	15:18'35.080
4	22.734	34.363	32.478	20.956	1'50.531	250,6	15:20'25.611
5	22.074	33.139	29.369	18.460	1'43.042	249,4	15:22'08.653
6	21.911	33.001	29.423	18.504	1'42.839	249,4	15:23'51.492
7	21.890	49.293	48.490	7'56.542	9'56.215P	248,3	15:33'47.707
8	1'00.131	49.670	36.721	19.954	2'46.476P	137,8	15:36'34.183
9	24.772	36.269	32.232	18.797	1'52.070	146,7	15:38'26.253
10	22.508	33.338	29.240	18.466	1'43.552	242,2	15:40'09.805
11	21.888	32.795	28.962	18.245	1'41.890	246,6	15:41'51.695
12	21.908	32.856	33.093	19.986	1'47.843	245,5	15:43'39.538
13	22.078	32.887	28.974	18.386	1'42.325	244,3	15:45'21.863

85 M. CAPIETTO (1'40.081)

Lap	Seg.1	Seg.2	Seg.3	Seg.4	Lap Time	km/h	Local Time
1							15:15'44.763
2	39.895	38.470	34.054	19.756	2'12.175P	175,6	15:17'56.938
3	23.531	36.292	31.779	19.237	1'50.839	241,6	15:19'47.777
4	23.600	35.306	32.032	18.252	1'49.190	241,6	15:21'36.967
5	21.751	32.875	28.577	18.121	1'41.324	249,4	15:23'18.291
6	21.769	32.548	36.644	6'27.915	7'58.876P	246,6	15:31'17.167
7	46.048	33.481	32.526	18.248	2'10.303P	175,6	15:33'27.470
8	21.801	32.551	28.678	18.122	1'41.152	247,7	15:35'08.622
9	21.746	34.213	30.843	18.434	1'45.236	246,6	15:36'53.858
10	21.768	32.597	28.673	18.085	1'41.123	247,1	15:38'34.981
11	21.646	32.648	28.584	5'19.405	6'42.283P	248,8	15:45'17.264
12	51.650	36.587	36.435	5'09.326	7'13.998P	177,3	15:52'31.262
13	51.058	35.575	31.726	18.962	2'17.321P	143,8	15:54'48.583
14	22.866	34.734	31.343	21.335	1'50.278	240,5	15:56'38.861
15	21.614	32.220	28.377	17.918	1'40.129	248,8	15:58'18.990
16	21.480	33.934	29.768	17.970	1'43.152	250,6	16:00'02.142
17	21.580	32.228	28.513	17.947	1'40.268	247,7	16:01'42.410
18	21.666	33.747	29.103	18.169	1'42.685	248,3	16:03'25.095
19	21.526	32.239	28.422	17.894	1'40.081	247,7	16:05'05.176

88 M. ZAGAZETA (1'39.913)

Lap	Seg.1	Seg.2	Seg.3	Seg.4	Lap Time	km/h	Local Time
1							15:14'17.193
2	40.197	37.907	33.412	19.829	2'11.345P	161,9	15:16'28.538
3	24.595	36.350	32.087	19.738	1'52.770	214,7	15:18'21.308
4	24.526	35.413	31.517	21.707	1'53.163	208,5	15:20'14.471

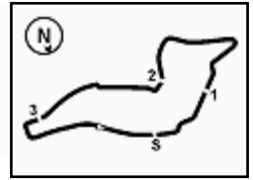
21/04/2023

P = Pits In/Out - C = Lap Time Cancelled



Powered by FICR PERUGIA TIMING





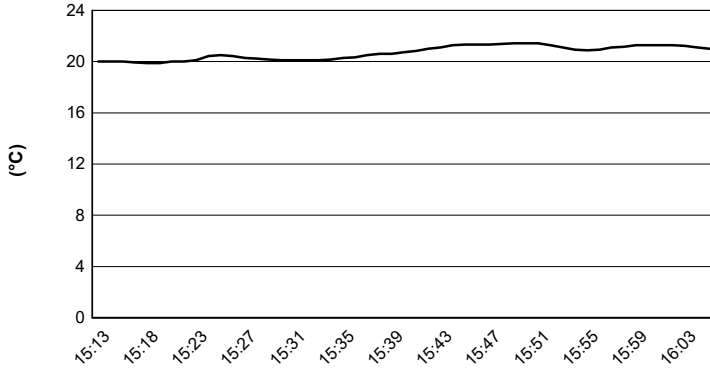
Imola Circuit 4.909 m

ACI Racing Weekend Imola, 22-23 Aprile 2023

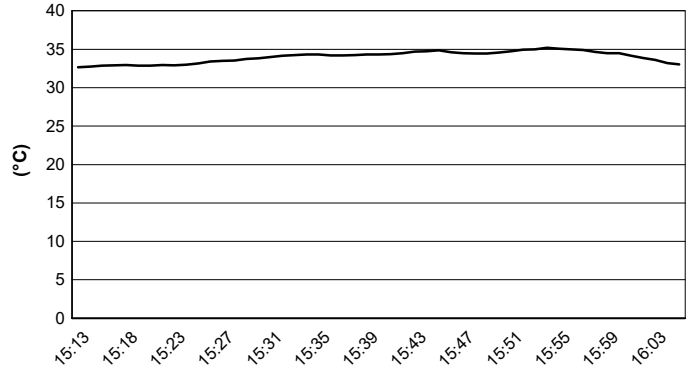
Weather Report Collective Test 2

Session started 15:14 - Session ended 16:06

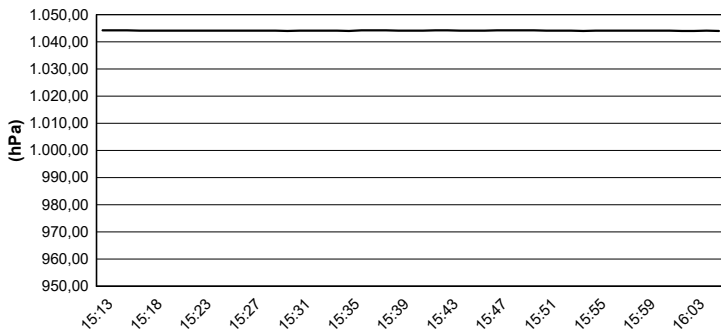
Air Temperature



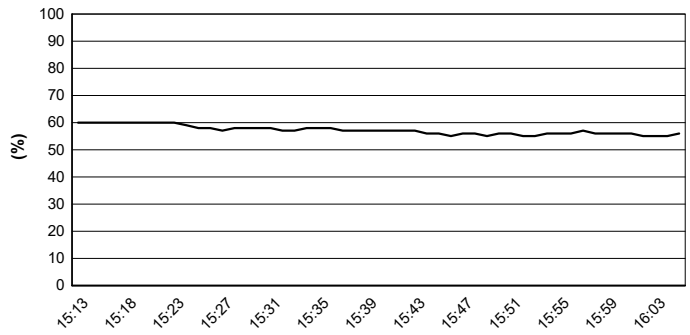
Track Temperature



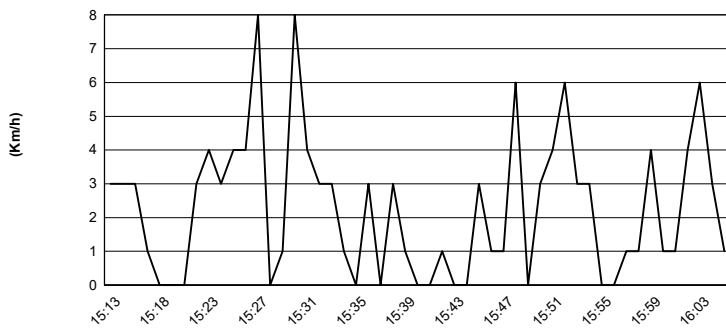
Air Pressure



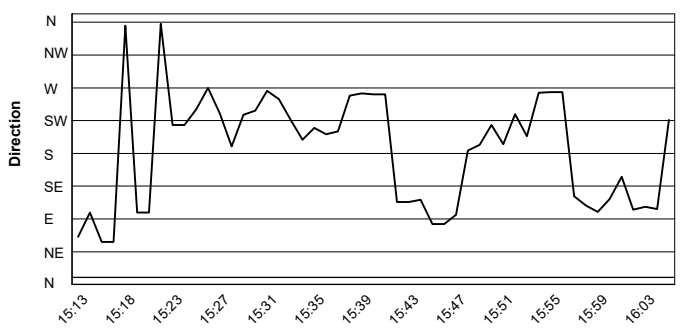
Humidity



Wind Speed



Wind Direction



21/04/2023

